



REAL-TIME FFL

FLOOR FLATNESS
AND LEVELNESS



Real-time Floor Flatness and Levelness

Reduce ASTM E1155 reporting from days to minutes with superior data quality and streamlined FFL analysis directly from scan data loaded into Autodesk® Navisworks®.

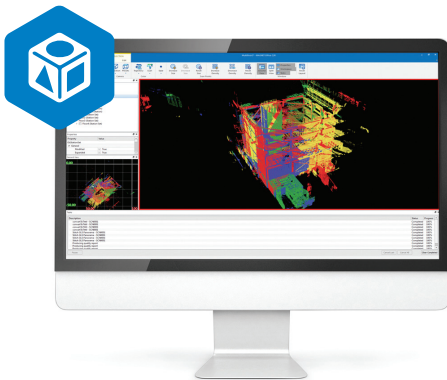
This real-time FFL workflow offers an affordable hardware and software solution that ensures a quick and reliable process for delivering ASTM E1155 compliant FFL reports. With this integrated solution, you can reduce costs while improving the accuracy and quality of your projects, which also leads to more satisfied clients.



GLS-2000

Multi-functional 3D laser scanner

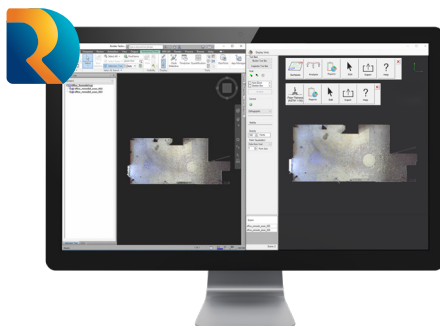
- Compact, high-speed scanning
- Robust design for job site conditions
- Mode settings ideal for horizontal surfaces



MAGNET® Collage

Complete, fully featured 3D point cloud software

- Fast and easy point data processing
- Accepts data sets from multiple sensor types
- Share data sets online with MAGNET® Collage Web



Rithm

Concrete flatness and levelness software directly integrated with Autodesk® Navisworks®

- ASTM E1155 reporting in minutes
- Quick and reliable QA
- Bring your FFL analysis in-house
- Analysis on wet or dry concrete

Real-time FFL

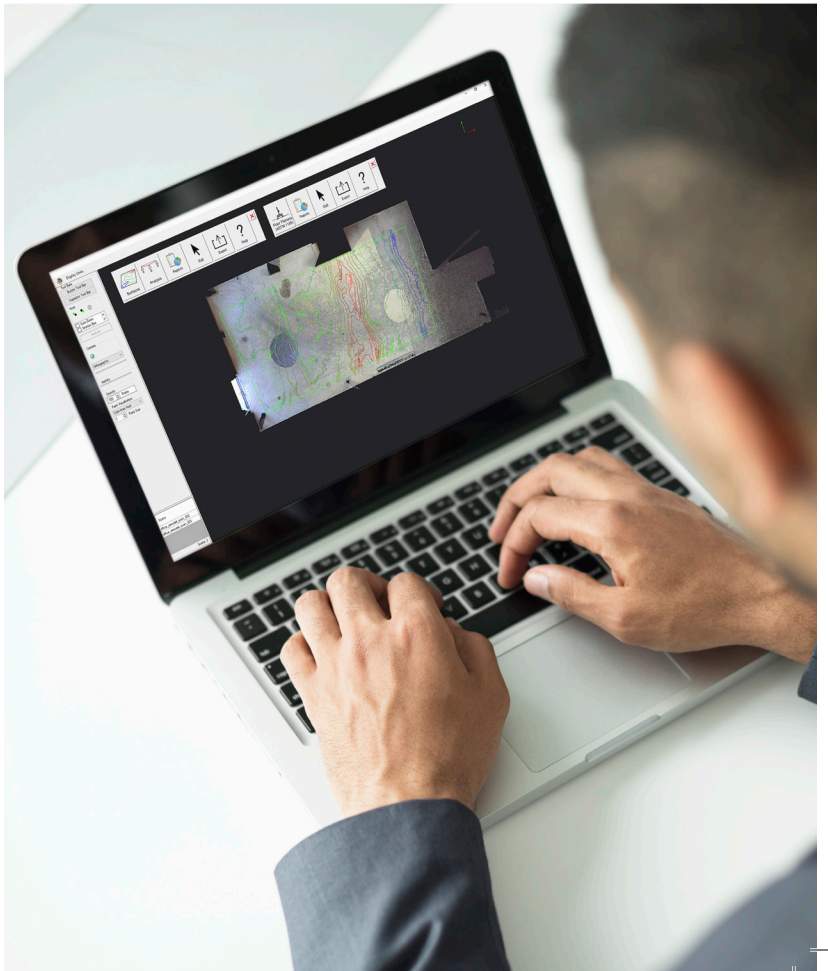
Quality Assurance



Rithm
for AUTODESK® NAVISWORKS®



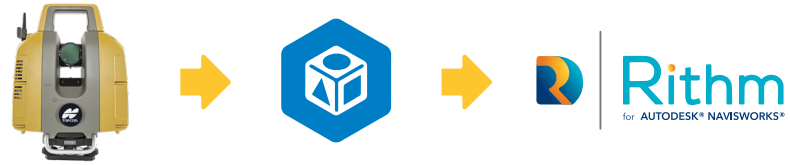
ASTM
E1155



GLS-2000 Scanner Specifications

System Performance	
Maximum Range (at 90% reflectivity)	
GLS-2000S	130 m (High Speed)
GLS-2000M	350 m (Standard)
GLS-2000L	500 m (Standard)
Single Point Accuracy	
Distance	3,5 mm (1-150 m), 1 sigma
Angle	6"
Tilt Sensor	
Type	Liquid 2-axis tilt sensor
Range	+/- 6'
Target Detection Accuracy	
	3" at 50 m
Laser Scanning System	
Type	Pulse (Time-of-Flight); Precise Scan Tech. II
Laser Class	3R (High / Standard) 1M (Low Power)
Scan Rate	Up to 120,000 pts/sec
Spot Size	≤ 4 mm at 20 m (FWHM)
Field of View	360° H / 270° V
Color Digital Imaging	
Wide-angle	170° Diagonal
Telephoto	11.9° H / 8.9° V
Scanning Control	
Control System	On-board
Display	3.5" Touch Screen
Data Storage	SD Card
Physical and Environmental	
Operation Temp	23°F to 113°F
Storage Temp	-4°F to 140°F
Dust / Humidity	IP54
Weight	24 lbs. with batteries and tribrach

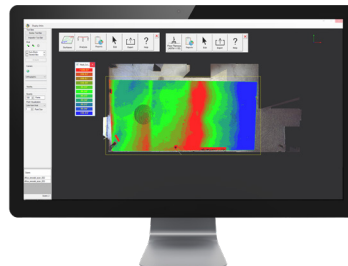
An Enhanced Workflow for Your FFL Needs



Own your QA workflows and reduce floor profiling costs
 Have full control of your QA workflows by using your own tools and working with your own team.



Check wet concrete while it is still workable
 Reduce costly and time-consuming rework by being able to fix mistakes faster.



Easily visualize flooring deviations
 Obtain insightful data on the spot with heat maps, contours and grid points for fast and reliable QA.



For more information:
topconpositioning.com

Specifications subject to change without notice.
 ©2019 Topcon Corporation All rights reserved.
 7010-2264 A 1/19

