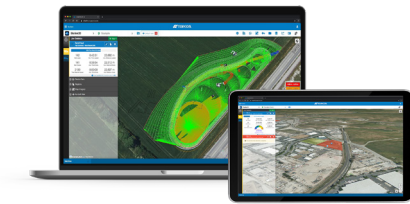


Get connected with your job site

Sitelink3D Web Service



Sitelink3D connects the
office with your site, anytime
from everywhere



Pay-by-the-day for connected machines

Remote view and control for support and training

Automated design data synchronization in real-time

As-built recording for Earthmoving and Compaction

Dashboard Widgets for Hauling and Weighing

Productivity and VETA reporting

Mass Haul Tracking via mobile app

Keep your site on track and avoid downtime



Sitelink3D

Sitelink3D is a web-based platform providing managers, personnel and other stakeholders with a suite of tools to help them effectively manage, monitor and support their job sites. Sort, filter and administrate your design data into easily selectable tasks for the machine operators just from your office.

Connect Sitelink3D enabled systems via the built in site discovery feature. Follow up on site activities and assist the operators via remote view and control tools.

With a pay-by-the-day service model you only pay for the days you actually worked. Use your Topcon Service Points for your entire fleet, not only for machine control related systems but also for Weighing, Hauling and Support Desk applications.



Sitelink3D Exchange

With the Sitelink3D Exchange web service it has never been easier to bring design data to 3DMC or Pocket3D. Setup a site and upload the data directly via the service or sync data to the site via 3rd party cloud services. As soon as the machine has connected, data will synchronize automatically. Don't lose any time, transmit plan changes directly in seconds, from your desktop or even from mobile devices. Benefit from the clear user interface and the simplified workflow.



Sitelink3D Insights

This Microsoft Excel Add-In provides Topcon users with easy access to detailed raw and processed data at Sitelink3D sites. It's as simple as a few clicks. Enjoy the freedom to easily format, visualize, automate, and create reports directly within Excel.



Specifications subject to change without notice.
© 2024 Topcon Corporation. All rights reserved.
7010-2382 D 05/24

www.topconpositioning.com

